

FACING MACHINES





$\varnothing 3 - \varnothing 25,4 \text{ mm}$
 $\varnothing 0,1 \text{ to } \varnothing 1 \text{ ''}$

Burr-free tube squaring machine

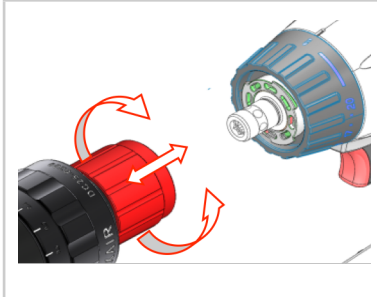
- Accurate manual advance (0.1 mm steps) - Light and compact: 2.8 kg / 6 lbs with battery

Drill / Driver:

- QuiXS quick change system
- 18V motor
- Lithium-Ion technology
- LED battery charge indicator
- Supplied with two 1.5 Ah 18V batteries, rapid battery charger



Jaw opens wide for easy positioning of tube.



QuiXS: Lets you change the head or fit a chuck in just a few seconds.



Optionally, we can supply a package with a DC65 head

References	Accessories	Consumables
DC25-P2 (230 V) DC25-P1 (120 V)	DCM25-XX: XX mm diameter jaws for DC25	DC-OUT1: Box of 10 blades, TIALN HSS-E DC-UOUT1: Blade, TIALN HSS-E (single unit) DC-OUT2: Blade tightening screw Tool adjusted to the diameter of tube to be machined in just a few seconds





ø3 - ø63,5 mm

ø0,1 to ø2,5 "

Burr-free tube squaring and bevelling machine

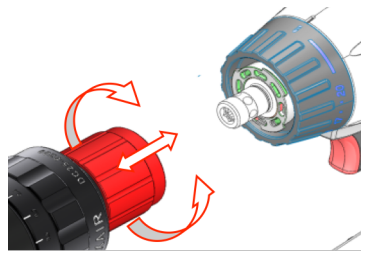
- Accurate manual advance (0.1 mm steps)
- Quick blade adjustment, no disassembly required
- Light and compact: 7.1 kg with battery
- Removable support foot
- 30° and 45° outside bevel possible with optional tool holder.
- squaring and bevelling in one operation

Drill / Driver

- QuiXS quick change system
- 18V motor
- Lithium-Ion technology
- LED battery charge indicator
- Supplied with two 3Ah 18V batteries, rapid battery charger



Jaw opens wide for easy positioning of tube.



QuiXS: Lets you change the head or fit a chuck in just a few seconds.



Tool adjusted to the diameter of tube to be machined in just a few seconds.

References	Accessories	Consumables
DC65-G2 (230 V) DC65-G1 (120 V)	<p>DCM65A-XX: Jaws for diameters between 1 and 2,5 inches for the DC65.</p> <p>DCM65B-XX: Jaws for diameters between 0,1 and 1 inch. for the DC65.</p> <p>DCM6525: Spacer for fitting DC25 jaws on a DC65.</p> <p>DC65-P300: 30° bevel tool holder DC65-P450: 45° bevel tool holder</p>	<p>DC-OUT1: Box of 10 blades, TIALN HSS-E</p> <p>DC-UOUT1: Blade, TIALN HSS-E (single unit)</p> <p>DC-OUT2: Blade tightening screw Tool adjusted to the diameter of tube to be machined in just a few seconds</p>





ø3 - ø63,5 mm
ø0,1 to ø2,5 "

DC25 and DC65 package

AXXAIR offers a set which combines the best in squaring in a single box.

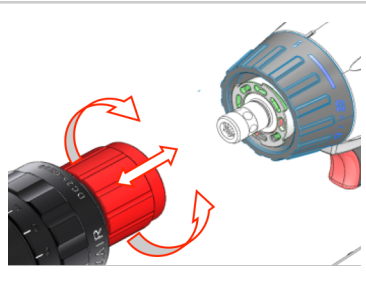
- 3.0Ah 18V drill driver with all accessories.
- DC25 squaring head
- DC65 squaring head

With the **QuiXS** system, you can change from one set-up to another in just a few seconds.

DC25: true up tubes with a light, ultra-compact machine.
DC65: **squaring and bevelling** (optional bevelling tool holder) on the bench or directly on the tubes (dismountable foot).



Jaw opens wide for easy positioning of tube.



QuiXS: Lets you change the head or fit a chuck in just a few seconds.



Tool adjusted to the diameter of tube to be machined in just a few seconds.

References	Accessories	Consumables
<p>DCPACK-G2 (230 V)</p> <p>DCPACK-G1 (120 V)</p>	<p>DCM25-XX: XX mm diameter jaws for DC25</p> <p>DCM65A-XX: Jaws for diameters between 1 and 2,5 inches for the DC65.</p> <p>DCM65B-XX: Jaws for diameters between 0,1 and 1 inch. for the DC65.</p> <p>DCM6525: Spacer for fitting DC25 jaws on a DC65.</p> <p>DC65-P300: 30° bevel tool holder</p> <p>DC65-P450: 45° bevel tool holder</p>	<p>DC-OUT1: Box of 10 blades, TIALN HSS-E</p> <p>DC-UOUT1: Blade, TIALN HSS-E (single unit)</p> <p>DC-OUT2: Blade tightening screw Tool adjusted to the diameter of tube to be machined in just a few seconds</p>





$\varnothing 3 - \varnothing 25,4 \text{ mm}$
 $\varnothing 0,1 \text{ to } \varnothing 1 \text{ ''}$

Burr-free tube squaring machine

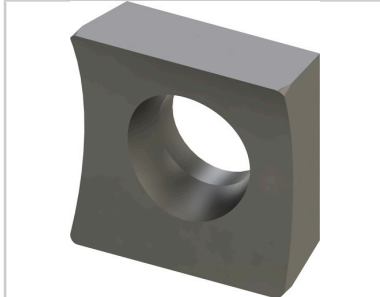
- Accurate manual advance (0.1 mm steps) - Light and compact: 4,3 kg / 9 lbs

Mains motor

- Motor 1100W.
- Two speed reducer with thumbwheel speed change.
- Top quality speed changer.
- Anti-start protection.
- Reduction housing in cast aluminium



Jaw opens wide for easy positioning of tube.



HSS TIALN HIGH QUALITY
 Reversible blade (two cutting edges)



Optionally, we can supply a package with a DC65 head

References	Accessories	Consumables
DC25-M1 (120 V) DC25-M2 (230 V)	DCM25-XX: XX mm diameter jaws for DC25	DC-OUT1: Box of 10 blades, TIALN HSS-E DC-UOUT1: Blade, TIALN HSS-E (single unit) DC-OUT2: Blade tightening screw Tool adjusted to the diameter of tube to be machined in just a few seconds





ø3 - ø63,5 mm

ø0,1 to ø2,5 "

Burr-free tube squaring and bevelling machine

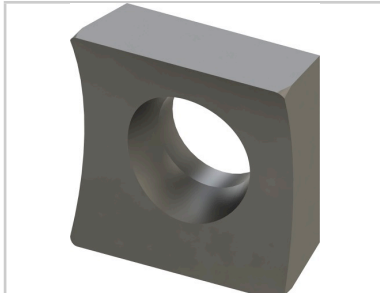
- Accurate manual advance (0.1 mm steps)
- Quick blade adjustment, no disassembly required
- Light and compact: 7.1 kg with battery
- Removable support foot
- 30° and 45° outside bevel possible with optional tool holder.
- squaring and bevelling in one operation
- Reduction housing in cast aluminium

Mains motor

- Motor 1100W.
- Two speed reducer with thumbwheel speed change.
- Top quality speed changer.
- Anti-start protection.



Jaws open wide for easy positioning of tube.



HSS TIALN HIGH QUALITY
Reversible blade (two cutting
edges)



Tool adjusted to the diameter of tube to be machined
in just a few seconds.

References	Accessories	Consumables
DC65-M1 (120 V) DC65-M2 (230V)	<p>DCM65A-XX: Jaws for diameters between 1 and 2,5 inches for the DC65.</p> <p>DCM65B-XX: Jaws for diameters between 0,1 and 1 inch. for the DC65.</p> <p>DCM6525: Spacer for fitting DC25 jaws on a DC65.</p> <p>DC65-P300: 30° bevel tool holder DC65-P450: 45° bevel tool holder</p>	<p>DC-OUT1: Box of 10 blades, TIALN HSS-E</p> <p>DC-UOUT1: Blade, TIALN HSS-E (single unit)</p> <p>DC-OUT2: Blade tightening screw Tool adjusted to the diameter of tube to be machined in just a few seconds</p>





ø3 - ø63,5 mm
ø0,1 to ø2,5 "

DC25 and DC65 package

AXXAIR offers a set which combines the best in squaring in a single box.

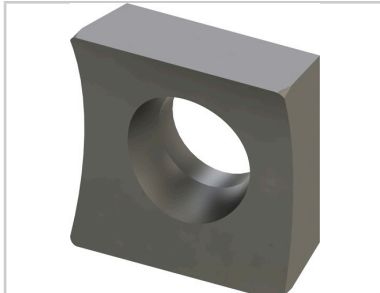
- A mains motor 1100W
- DC25 squaring head
- DC65 squaring head

You can change from one set-up to another in just a few seconds.

DC25: true up tubes with a light, ultra-compact machine.
DC65: **squaring and bevelling** (optional bevelling tool holder) on the bench or directly on the tubes (dismountable foot).



Jaws open wide for easy positioning of tube.



HSS TIALN HIGH QUALITY
Reversible blade (two cutting edges)



Tool adjusted to the diameter of tube to be machined in just a few seconds.

References	Accessories	Consumables
<p>DCPACK-M1 : Pack DC25 + DC65 (120 V)</p> <p>DCPACK-M2 : Pack DC25 + DC65 (230 V)</p>	<p>DCM25-XX: XX mm diameter jaws for DC25</p> <p>DCM65A-XX: Jaws for diameters between 1 and 2,5 inches for the DC65.</p> <p>DCM65B-XX: Jaws for diameters between 0,1 and 1 inch. for the DC65.</p> <p>DCM6525: Spacer for fitting DC25 jaws on a DC65.</p> <p>DC65-P300: 30° bevel tool holder</p> <p>DC65-P450: 45° bevel tool holder</p>	<p>DC-OUT1: Box of 10 blades, TIALN HSS-E</p> <p>DC-UOUT1: Blade, TIALN HSS-E (single unit)</p> <p>DC-OUT2: Blade tightening screw Tool adjusted to the diameter of tube to be machined in just a few seconds</p>





ø12 - ø115 mm

ø0,5 to ø4,5 "

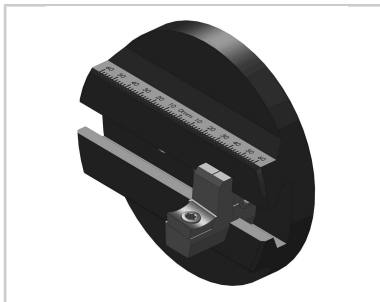
Burr-free tube squaring and bevelling machine

- thickness < 3mm (according to material)
- Ideal tool to face a band saw cut before automatic welding
- Accurate manual advance: 0.1 mm step graduation 4/1000 inches
- Sliding adjustment of tool holder offers easy diameter change and optimal tip wearing
- 30° and 45° outside bevel possible with optional tool holder.
- Squaring and bevelling in one operation.
- Possibility to use two tools simultaneously.
- Minimal straight length of the tube: 28 mm.
- Delivered in high quality protection case.

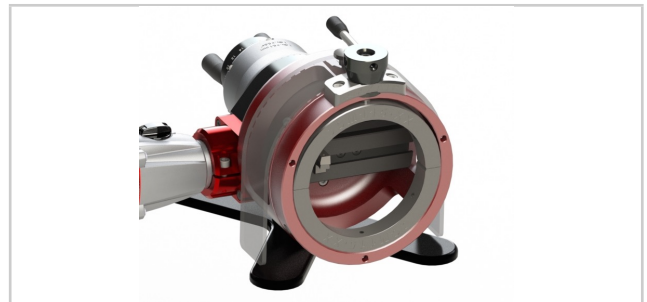
- Light and compact : 11 kg / 24 lbs
- Motor 1100W with large speed range (2 gear)
- Worm and gear transmission for optimal speed range



Stainless steel clamping collets
One set per diameter



Sliding adjustment of tool Holder (30 or 45° bevel angle)



Easy clamping of the tube.

References	Accessories	Consumables
DC115-AM2 (230 V) DC115-AM1 (120 V)	DCM115-XXX : Clamping jaw for DC115	<p>DC-OUT1: Box of 10 blades, TIALN HSS-E</p> <p>DC-UOUT1: Blade, TIALN HSS-E (single unit)</p> <p>DC-OUT2: Blade tightening screw Tool adjusted to the diameter of tube to be machined in just a few seconds</p>





Ø12 - Ø115 mm

Ø0,5 to Ø4,5 "

Big range: Ø12 to Ø115 mm through concentric clamping on the full diameter range

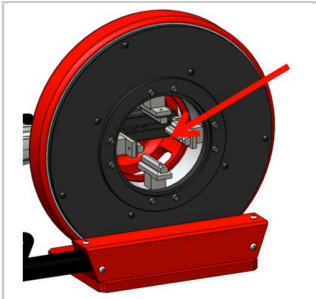
Burr-free tube squaring and bevelling machine

- thickness < 3mm (according to material)
- Ideal tool to face a band saw cut before automatic welding
- Accurate manual advance: 0.1 mm step graduation 4/1000 inches
- Sliding adjustment of tool holder offers easy diameter change and optimal tip wearing
- 30° and 45° outside bevel possible with optional tool holder.
- Squaring and bevelling in one operation.
- **Possibility to use two tools simultaneously.**
- Minimal straight length of the tube: 58 mm.
- Delivered in wooden box.

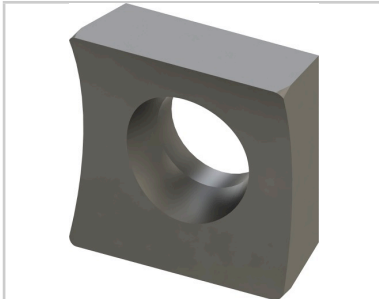
Weight: 37 kg / 82 lbs

Motor 1100W with large speed range (2 gear)

Worm and gear transmission for optimal speed range



4 concentric stainless steel jaws: straight length for clamping 58 mm



HSS TIALN HIGH QUALITY
Reversible blade (two cutting edges)



Bench mounting option: CCBSB-001

References	Accessories	Consumables
DC115-BM2 (230 V) DC115-BM1 (120 V)	Bench mounting option: CCBSB-001 CCSA21 : Pneumatic clamping for 121/171/221 and DC115-BM / DC221-BM	DC-OUT1: Box of 10 blades, TIALN HSS-E DC-UOUT1: Blade, TIALN HSS-E (single unit) DC-OUT2: Blade tightening screw Tool adjusted to the diameter of tube to be machined in just a few seconds





ø50 - ø220 mm

ø2 to ø8,5 "

Burr-free tube squaring and edge breaking machine used after a band saw cut or on electropolished tubes

- Thickness < 0,12" (3 mm) according to material
- Ideal tool to face a band saw cut before automatic welding
- Accurate manual advance: 4/1000" (0,1 mm) step graduation
- Sliding adjustment of tool holder offers easy diameter change and optimal tip wearing
- 30° and 45° outside edge breaking possible with optional tool holder
- Squaring and edge breaking in one operation
- **Possibility to use three tools simultaneously**
- Minimal straight length of the tube: 1,54" (39 mm)
- Delivered in high quality protection case
- **Light and compact: 46 lbs. (21 kg)**
- Motor 1100W with large speed range (2 gears)
- Screw and wheel drive to optimize the speed range and eliminate vibrations



Stainless steel clamping collets
One set per diameter



Possibility to use three tools simultaneously.
- Sliding adjustment of tool holder offers easy diameter change and optimal tip wearing



Easy clamping of the tube.

References	Accessories	Consumables
DC221-AM2 (230 V) DC221-AM1 (120 V)	DCM221-XXX : Clamping jaw for DC221	<p>DC-OUT1: Box of 10 blades, TIALN HSS-E</p> <p>DC-UOUT1: Blade, TIALN HSS-E (single unit)</p> <p>DC-OUT2: Blade tightening screw Tool adjusted to the diameter of tube to be machined in just a few seconds</p>





ø50 - ø220 mm

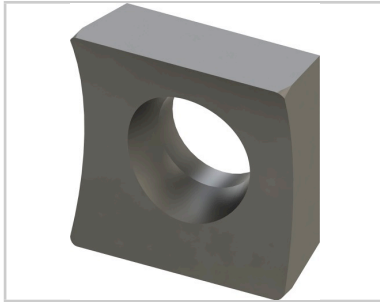
ø2 to ø8,5 "

Burr-free tube squaring and edge breaking machine used after a band saw cut or on electropolished tubes

- Thickness < 0,12" (3 mm) according to material
- Wide range of use with concentric clamping for all diameters
- Ideal tool to face a tube before automatic welding
- Accurate manual advance: 4/1000" (0,1 mm) step graduation
- Sliding adjustment of tool holder offers easy diameter change and optimal tip wearing
- 30° and 45° outside bevel possible with optional tool holder
- Squaring and beveling in one operation
- **Possibility to use three tools simultaneously**
- Minimal straight length of the tube: 2,44" (62 mm)
- Delivered in high quality protection case
- **Weight: 121 lbs. (55 kg)**
- Motor 1100W with large speed range (2 gears)
- Screw and wheel drive to optimize the speed range and eliminate vibrations



6 Stainless steel concentric jaws
Minimal straight length of the tube: 4,22" (62 mm)



High quality HSS-E TIALN blade
Reversible blade, two cutting edges



Bench mounting option: CCBSB-001

References	Accessories	Consumables
DC221-BM2 (230 V) DC221-BM1 (120 V)	Bench mounting option: CCBSB-001 CCSA21 : Pneumatic clamping for 121/171/221 and DC115-BM / DC221-BM	DC-OUT1: Box of 10 blades, TIALN HSS-E DC-UOUT1: Blade, TIALN HSS-E (single unit) DC-OUT2: Blade tightening screw Tool adjusted to the diameter of tube to be machined in just a few seconds

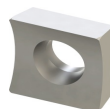


Consumables

DC-OUT1: Box of 10 blades, TIALN HSS-E

DC-UOUT1: Blade, TIALN HSS-E (single unit)

DC-OUT2: Blade tightening screw

**Accessories**

DCM25-XX: Jaws for DC25 machine. Tube diameter = XX.XX mm (3 to 1 inch).

DCM65A-XX: Jaws for DC65 machine. Tube diameter between 1 and 2,5 inches.

DCM65B-XX: Jaws for DC65 machine. Tube diameter between 0,1 and 1 inch.

DCM115-XXX : Jaws for DC115 machine

DCM221-XXX : Jaws for DC221 machine

Stainless steel jaws, so as not to pollute the tube. A set of jaws is necessary for each outside diameter of tube to be machined.

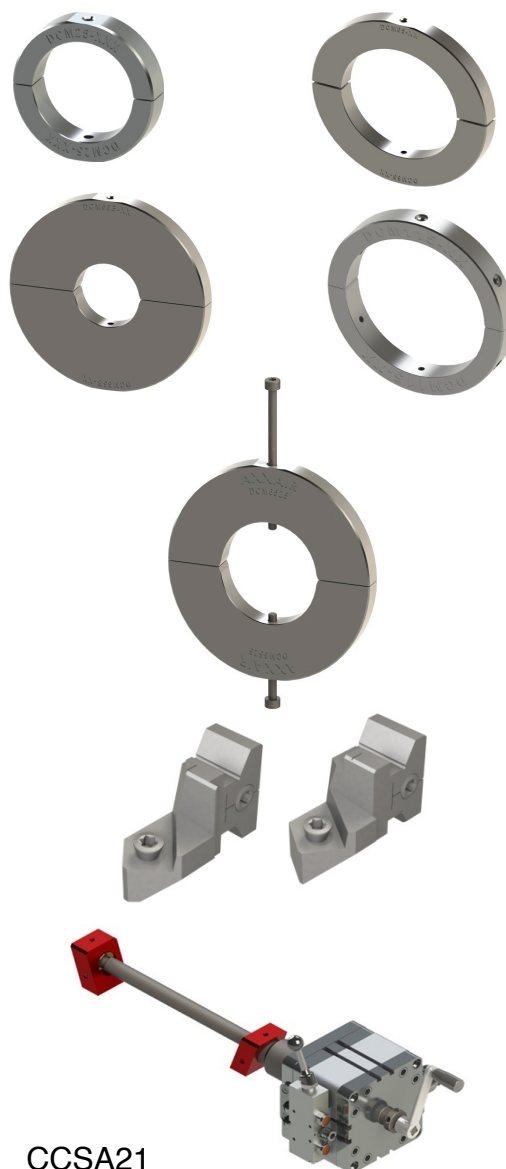
DCM6525: Spacer for fitting DC25 jaws on a DC65

DC65-P450: Tool holder for bevelling the outer edge at 45° *

DC65-P300: Tool holder for bevelling the outer edge at 30° *

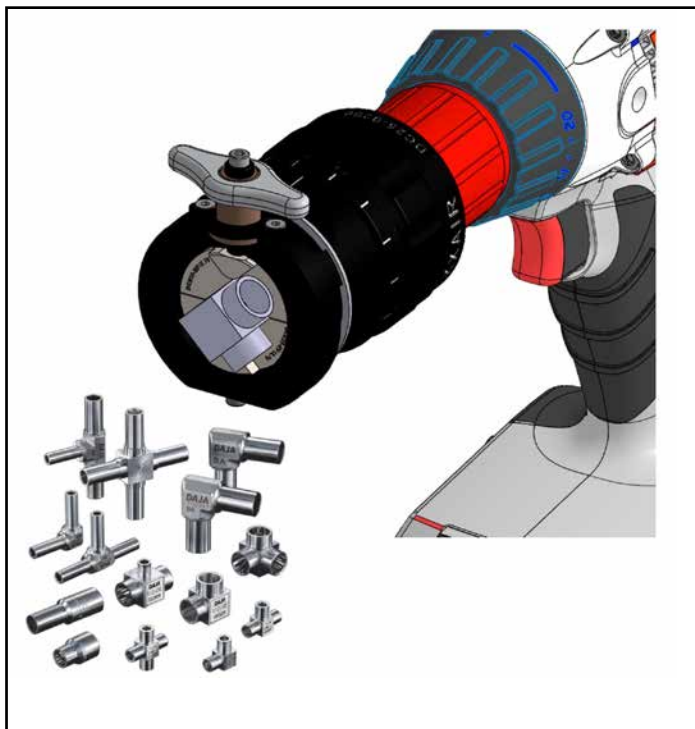
Tool holders are supplied without blades

CCSA21 : Pneumatic clamping for 121/171/221 and DC115-BM / DC221-BM



CCSA21

*Bevelling possible over the whole of the machine's range (0,1 to 2,5 inches), if squaring and bevelling, range between 20 and 53 mm diameter, max



Accessories

DCM25-MFxx.xx

Micro-fitting jaws for DC25 ONLY

- Stainless steel
- Straight length : 4,3 mm mini

DO NOT MOUNT THESE JAWS ON DC65 MACHINES

Reference	Designation
DCM25-MF03.18	Mors DC25 MF 3.18 mm (1/8") MicroFit Jaws for DC25 OD 3,18 mm (1/8")
DCM25-MF06.00	Mors DC25 MF 06.00mm MicroFit Jaws for DC25 OD 6,00 mm
DCM25-MF06.35	Mors DC25 MF 6.35 mm (1/4") MicroFit Jaws for DC25 OD 6,35 mm (1/4")
DCM25-MF08.00	Mors DC25 MF 08.00mm MicroFit Jaws for DC25 OD 8,00 mm
DCM25-MF09.53	Mors DC25 MF 9.53 mm (3/8") MicroFit Jaws for DC25 OD 9,53 mm (3/8")
DCM25-MF10.00	Mors DC25 MF 10.00mm MicroFit Jaws for DC25 OD 10,00 mm
DCM25-MF12.00	Mors DC25 MF 12.00mm MicroFit Jaws for DC25 OD 12,00 mm
DCM25-MF12.70	Mors DC25 MF 12.7mm (1/2") MicroFit Jaws for DC25 OD 12,7 mm (1/2")